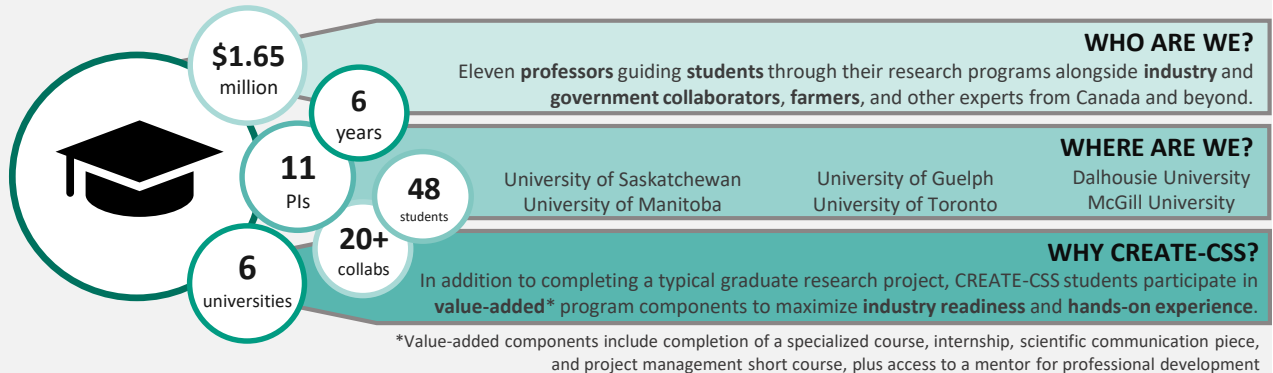


## ABOUT THE PROGRAM

CREATE-CSS is the first **multi-institutional training program** aiming to address the need for sustainable agriculture, led by **Dr. Claudia Wagner-Riddle** at the University of Guelph for natural and social science graduate students across Canada.



## COLLABORATE WITH US

Collaborators play an integral role in program and student success by offering expertise in soil, agriculture, greenhouse gasses and more to students in the classroom, on the farm, and in the workplace.

**Do you want to be a part of CREATE-CSS? Here's how you can join:**

### BE A MENTOR

Use your industry experience to help a graduate student develop professionally and navigate their career path.

**Commitment:**

1 hour per year  
1 student for length of degree



### HOST AN INTERN

Provide a hands-on experience for a graduate student, like job shadowing, a project to complete, or a literature review.

**Commitment:**

Flexible, varies with opportunity  
Financial support **not** required



### TEACH A MODULE

Share your knowledge of principles, assessment, or management of climate-smart soils with graduate students at the core course.

**Commitment:**

~3 hour module at core course  
(date TBD)



### JOIN A COMMITTEE

Contribute your ideas on a committee for student support or program delivery to help us facilitate a successful program.

**Commitment:**

1-year term  
3 meetings per year



## CONTACT + INFO

**Dr. Claudia Wagner-Riddle**  
Lead Investigator, University of Guelph  
cwagnerr@uoguelph.ca

**Jordan Minigan**  
CREATE-CSS Program Coordinator  
jminigan@uoguelph.ca



Follow us on Twitter  
[@SmartSoils](#)



For more info, visit  
[www.smartsoils.ca](http://www.smartsoils.ca)

**Do you know a prospective student?**

Send them to [smartsoils.ca/apply](http://smartsoils.ca/apply) to find out how to join CREATE-CSS!